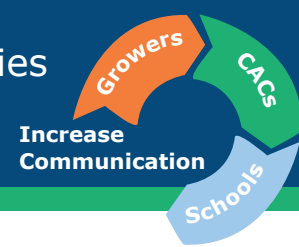


# Addressing Pesticides Used Near Schools and Child Day Care Facilities

## California Code of Regulations, Title 3, sections 6690–6692



Effective January 1, 2018:

- Regulations apply to pesticide applications made for the production of an agricultural commodity within ¼ mile of public K-12 schools and licensed child day care facilities, except family day care homes (collectively referred to as schoolsites)
- Pesticide application restrictions will apply Monday through Friday, from 6:00 a.m. to 6:00 p.m., within a specified distance of a schoolsite:
  - Two types of restriction distances: ¼ mile (1,320 feet) or 25 feet, depending on the type of application equipment used and type of pesticide applied (some application types are prohibited by labels or do not occur)

Application Equipment Type	Minimum Distance to Schoolsite by Equipment and Pesticide Type			
	Dust	Fumigant	Granule	All Other Pesticides
Airblast Sprayer	¼ mile	Prohibited	Doesn't occur	¼ mile
Aircraft	¼ mile	Prohibited	¼ mile	¼ mile
Backpack Sprayer	¼ mile	Prohibited	None	None*
Bait Station	None	Prohibited	None	None
Ground-Rig Sprayer	¼ mile	¼ mile	None	25 feet
Hand Pump Sprayer	¼ mile	¼ mile	None	None
Soil Injection	None	¼ mile	None	25 feet
Sprinkler Chemigation	Doesn't occur	¼ mile	Doesn't occur	¼ mile
All Other Equipment	¼ mile	¼ mile	None	25 feet

\*Backpack sprayers that incorporate an airblast sprayer to apply "other" pesticides are prohibited within ¼ mile.

- Exceptions to application restrictions: The prohibitions do not apply if school classes are not scheduled for the day of application or the child day care facility is closed during the entire day of the application. This allows applications during the day on holidays and school breaks
- An option for an agreement between a schoolsite, property operator, and County Agricultural Commissioner with alternative application restrictions that provide the same or a greater level of protection as provided by the prohibitions
- Field fumigations within ¼ mile of a schoolsite must be completed at least 36 hours before the start of classes
- An annual notification by property operators to schoolsites and County Agricultural Commissioners by April 30 that includes contact information and a list of all pesticides expected to be used within ¼ mile of a schoolsite during July through June
  - A new grower (through purchase or lease of a field) must provide the first notification within 30 days of assuming control of the property
- CalAgPermits is the suggested method that property operators use to develop and submit the notifications

### For more information contact:

County Agricultural Commissioner:  
[www.cdfa.ca.gov/exec/county/countymap/](http://www.cdfa.ca.gov/exec/county/countymap/)

Department of Pesticide Regulation:  
[www.cdpr.ca.gov/schoolnotify/](http://www.cdpr.ca.gov/schoolnotify/)

