



Midpeninsula Regional Open Space District

OPEN SPACE MAINTENANCE AND RESTORATION PROGRAM

San Mateo County Planning Commission
December 13, 2023

Midpen's Mission(s)



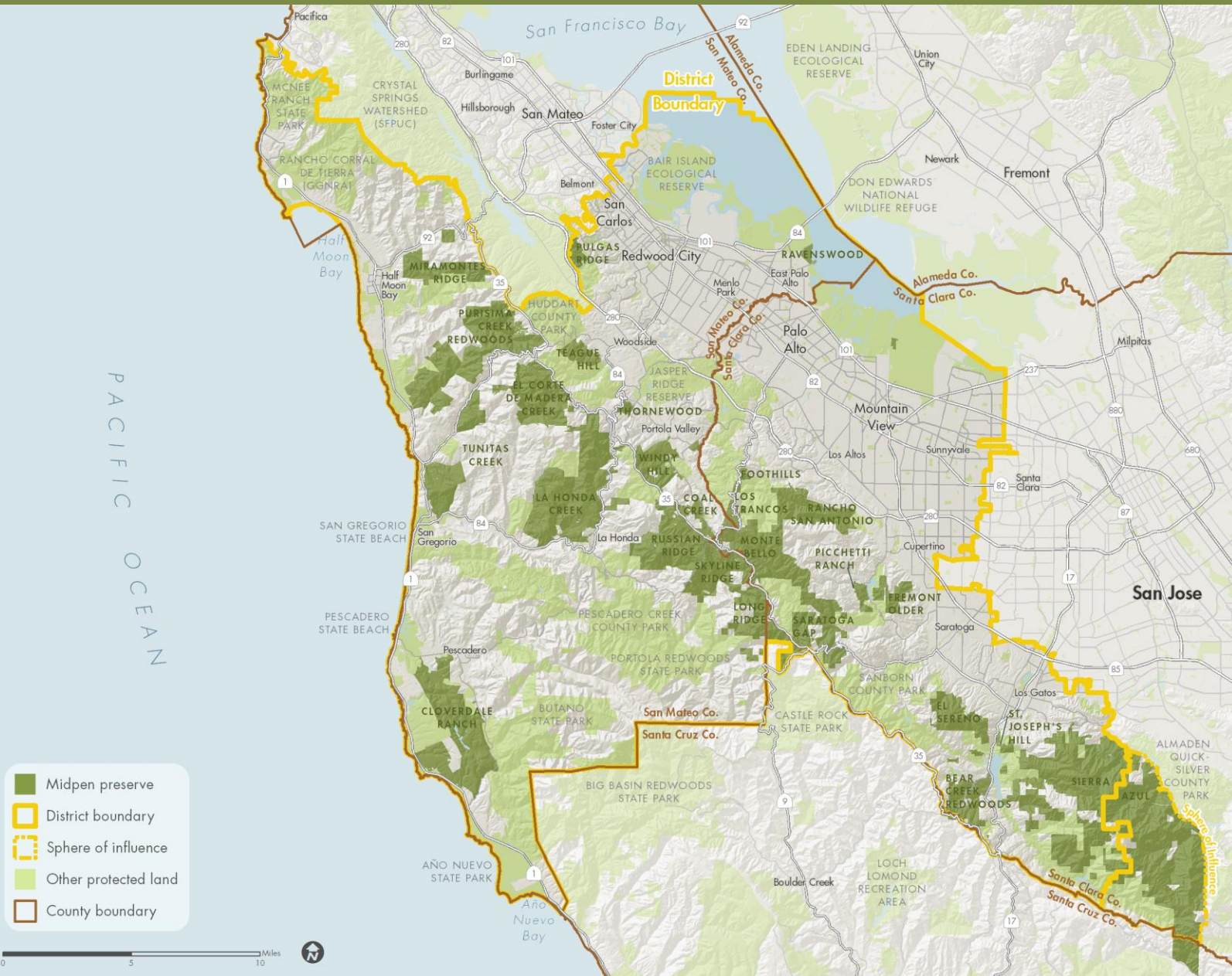
Midpen's mission: to acquire and preserve a regional greenbelt of open space land in perpetuity, protect and restore the natural environment, and provide opportunities for ecologically sensitive public enjoyment and education.

On the Coast, Midpen has an expanded mission to acquire and preserve agricultural land of regional significance, preserve rural character and encourage viable agricultural uses of land resources.



- PRESERVE**
- PROTECT**
- RESTORE**
- EDUCATE**
- ENJOY**

Midpen's Lands



- Midpen preserve
- District boundary
- Sphere of influence
- Other protected land
- County boundary



- PRESERVE**
- PROTECT**
- RESTORE**
- EDUCATE**
- ENJOY**



Some Midpen Facts

- Public agency, created in 1972 by a grassroots voter initiative
- 763,000 constituents (2020)
- Elected board: seven directors
- Funded primarily through property tax
- 27 Preserves in Santa Clara, San Mateo and Santa Cruz counties
- Preserved over 70,000 acres, 250+ miles of trails
- Preserves are free and open to the public
- Main office in Los Altos + field offices
- 200 employees, ~1,000 volunteers
- \$300 million voter-approved general obligation bond passed in 2014 to support public priorities



PRESERVE
PROTECT
RESTORE
EDUCATE
ENJOY



Midpeninsula Regional Open Space District

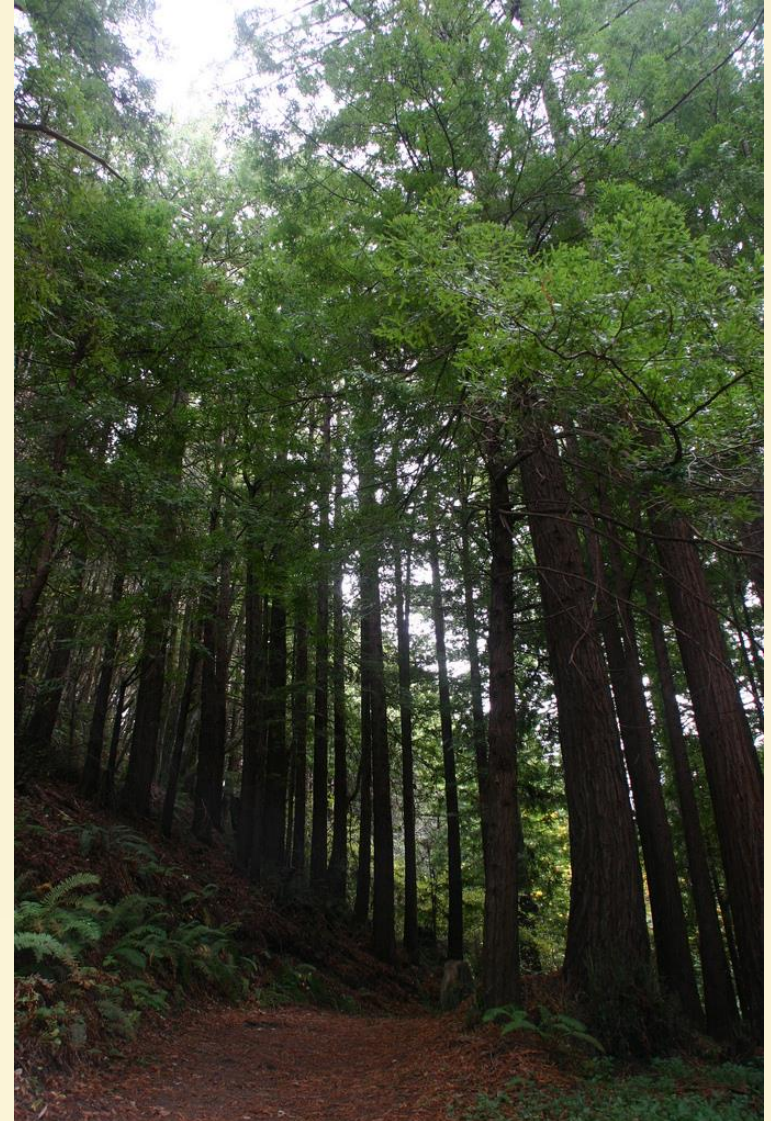
Covered Activities





Covered Activities - Categories

- Routine Maintenance Activities
- Small-scale Facility Improvements and New Low-intensity/Small Footprint Facilities
- Restoration and Enhancement Activities



Routine Maintenance



Stream Crossing Culverts



**Culvert Repair/
Replacement
Limits Per Site**

150 LF creek, 3,000 SF
100 CY culvert replacement
10 CY culvert repair

Annual Limits

20,000 SF, 5,000 CY
8-25 culverts sites/year

Culvert Maintenance



Plugged Culvert



Cleared Culvert



Trail Maintenance and Grading





Trail and Road Brushing



Integrated Pest Management Program Vegetation Brushing Roads and Trails	Estimated 230 miles of road and trail annually
	Treatment: 10' off road edge, 3' off trail
Annual Limits	724 acres



Wildland Fire Program (District-wide Totals)

Table 8-1 Maximum Annual Treatments

Activity	Treatment Type	Unit	Create New or Maintain Existing	Maximum Annual Treatments (Acres)
Shaded Fuelbreaks	Manual, mechanical, herbicide, prescribed herbivory	Acre	New	50
			Maintain	100
Non-Shaded Fuelbreaks	Mechanical, herbicide, prescribed herbivory	Acre	New	5
			Maintain	80

Annual Limits

1,230 acres New

1,400 acres Maintain Existing

Activity	Treatment Type	Unit	Create New or Maintain Existing	Maximum Annual Treatments (Acres)
Evacuation Routes, Critical Infrastructure, Fire Management Logistics Fuelbreaks	Manual, mechanical, herbicide, prescribed herbivory	Acre	New	400
			Maintain	400
Target Hazards Fuelbreaks	Manual, mechanical, herbicide, prescribed herbivory	Acre	New	20
			Maintain	20
Fire Agency New Recommended Fuelbreaks	Manual, mechanical, herbicide, prescribed herbivory	Acre	New	100
			Maintain	N/A ^a
Ingress/Egress Route Fuelbreaks	Mechanical, herbicide, prescribed herbivory	Acre	New	25
			Maintain	25
Disclines	Mechanical, herbicide	Acre	New	10
			Maintain	60
Midpen Structures and Facilities Defensible Space	Manual, mechanical, herbicide	Acre	New	As needed
			Maintain	175
Fire Management Logistics Areas	Manual, mechanical	Acre	New	100
			Maintain	30
Eucalyptus and Acacia Removal	Manual, mechanical, herbicide	Acre	New	20 ^b
			Maintain	10
Fuel Reduction Areas	Manual, mechanical, herbicide, prescribed herbivory	Acre	New	500
			Maintain	500
Total			New	1,230
			Maintain	1,400

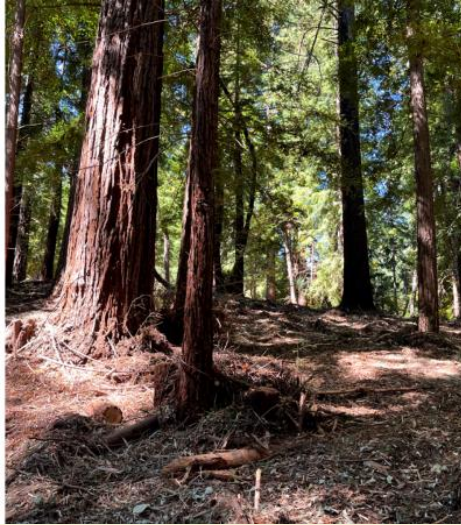
Notes: Monitoring actions will be determined by Midpen employees annually. Prescribed burning units and maximum burns per year will be defined through development of the PFP.

^a Fire agency recommended fuelbreaks are maintained under the applicable category.

^b An average of 55 trees and a maximum of 105 trees over 8 inches DBH per acre could be removed.



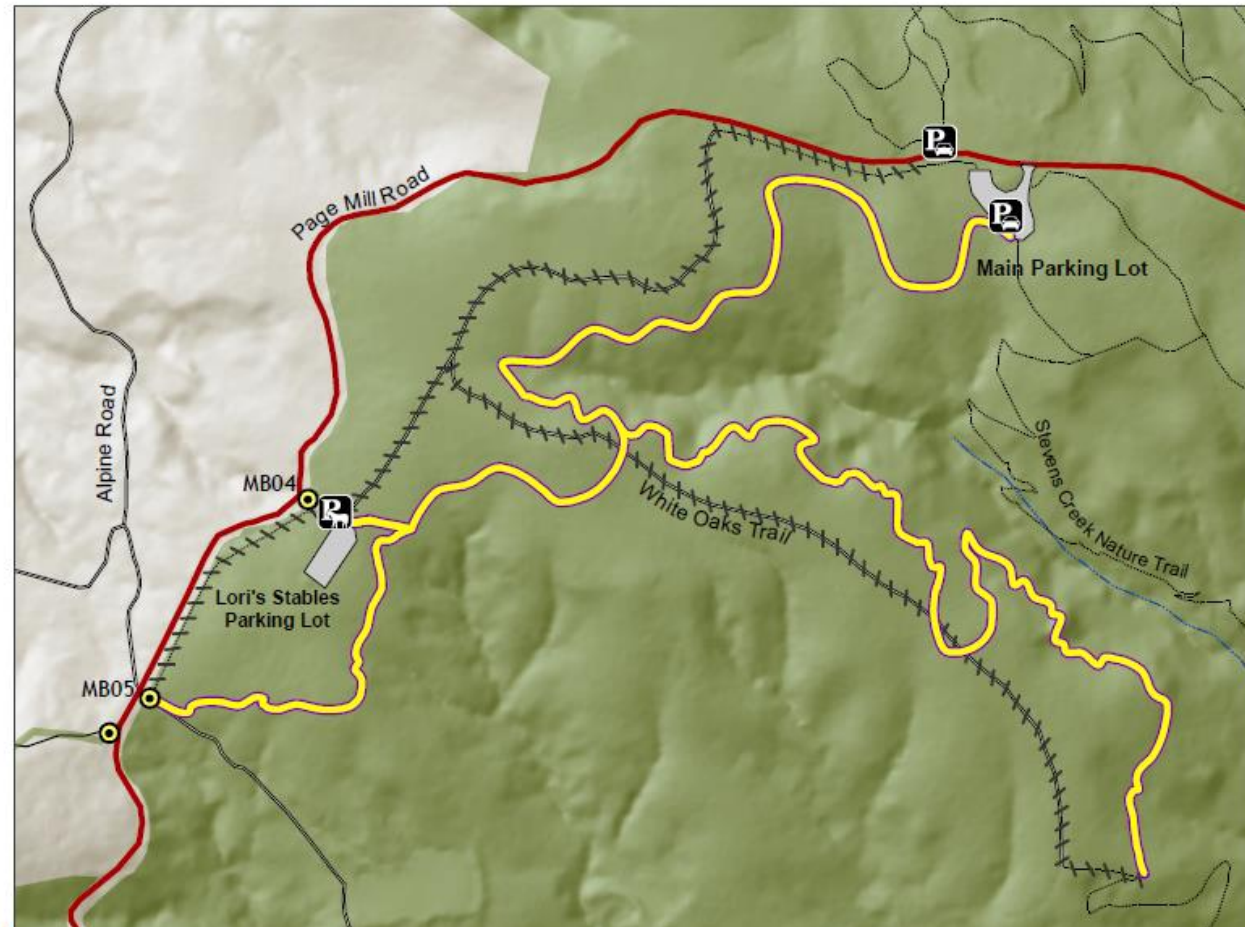
Wildland Fire Program Sites Before & After Maintenance














Small-scale Facility Improvements and New Low-intensity/Small Footprint Facilities

Trail Realignment – Monte Bello OSP



Project Map - -White Oaks Trail Realignment

- | | | |
|--|--|--|
|  New Trail Alignment |  Trail |  Parking Lot |
|  Existing Trail Section to be Removed |  Unpaved Road |  Equestrian Parking |
| |  Major Road |  Gate |
| |  OSP | |

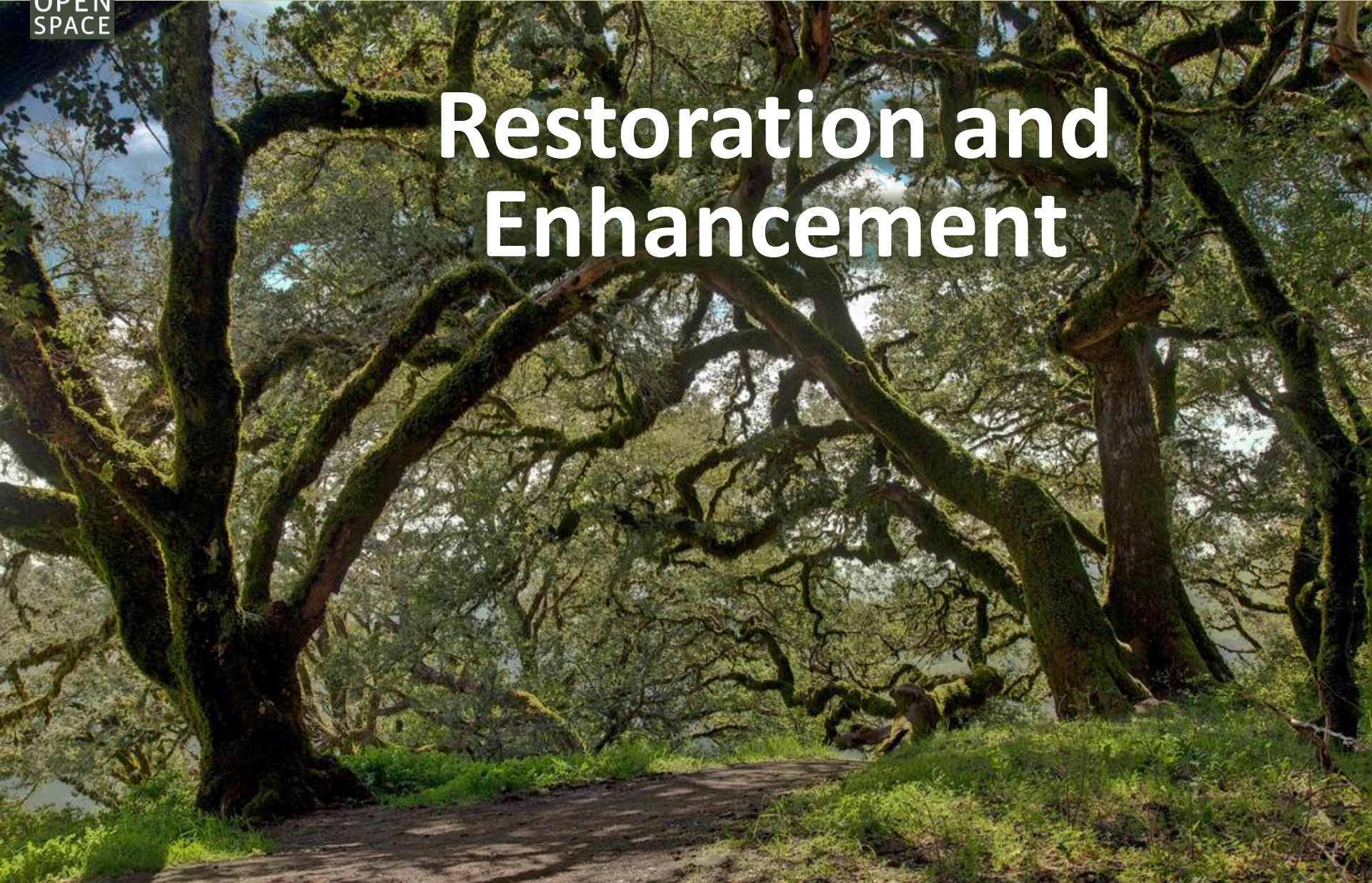
Trail Realignments Limits	800 CY, 5,800 LF, 45,000 SF per site
	4 site/year



Grazing Water Systems



Restoration and Enhancement



Restoration Limits

Ponds Restoration

20,000 SF, 1,200 CY per site, max 2 per year

Road Removal

160,000 SF, 10,000 LF, 10,000 CY per site, max 4 sites per year

Ecosystem Resiliency Fuel Treatments*

500 acres max, up to 20 sites and up to 50-150 trees removed per year across all sites

Non-native vegetation removal

450 acres, up to 30 trees, max 122 sites

Max 148 sites/year that intersect jurisdictional areas





Midpeninsula Regional Open Space District

Covered Activities Development Process





Midpen's Workflow for Covered Activities

- Generate Annual Project List
- Analyze Applicable Natural Resource Programs
- Review Applicable Planning CEQA documents
- Make Final State and Federal Environmental Permit Determination
- Project ready for County Permits
- Provide annual report to all applicable regulatory agencies at conclusion of implementation season



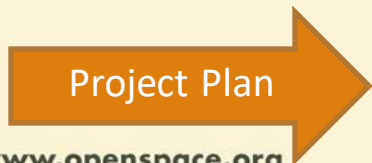
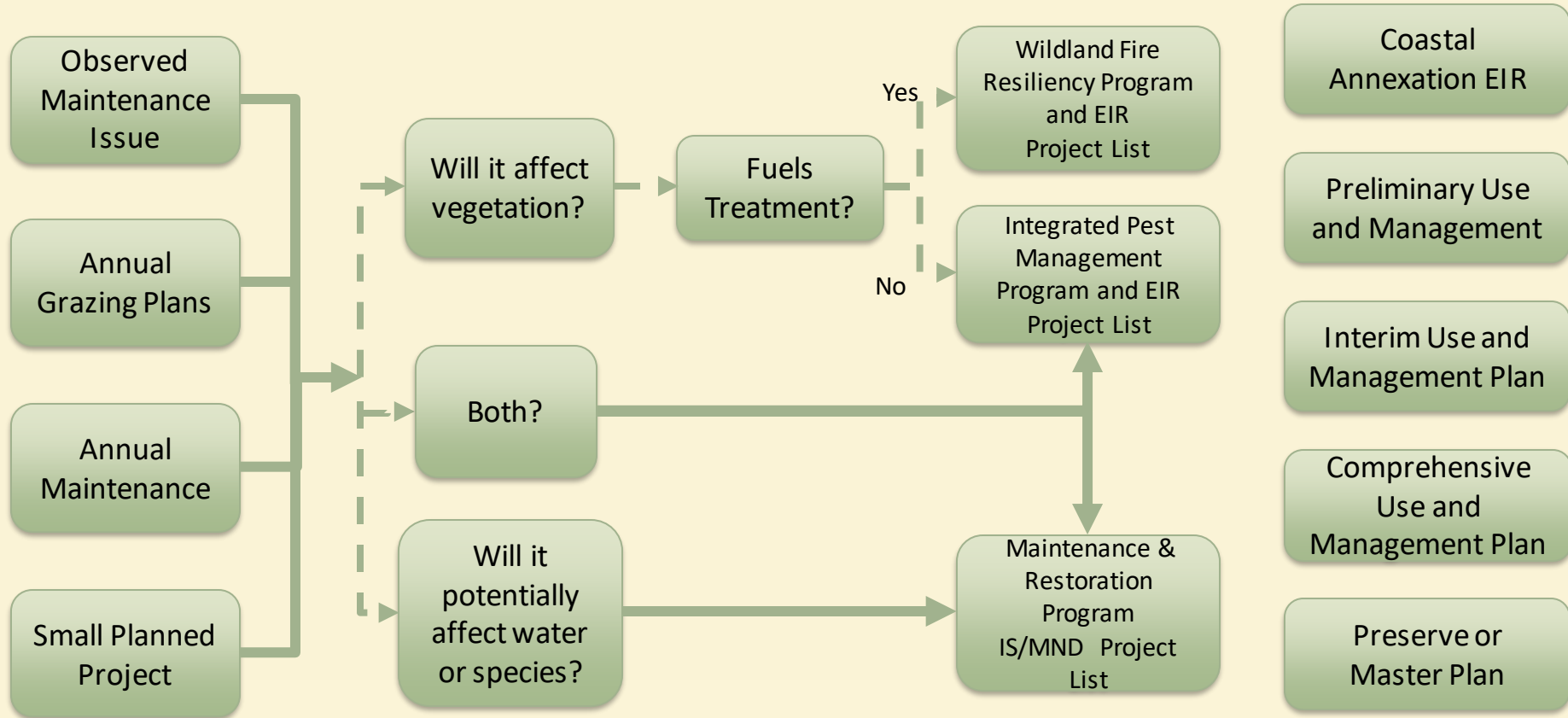


Midpen's Covered Activities Development Process

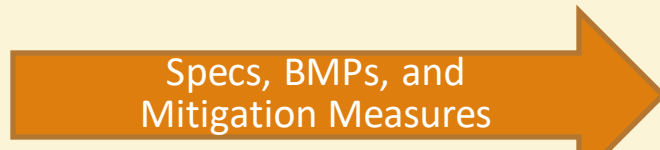
Activity Origin

Applicable Natural Resource Program

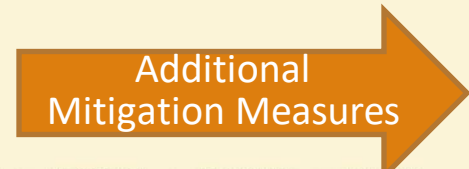
Other Applicable Planning Document



+

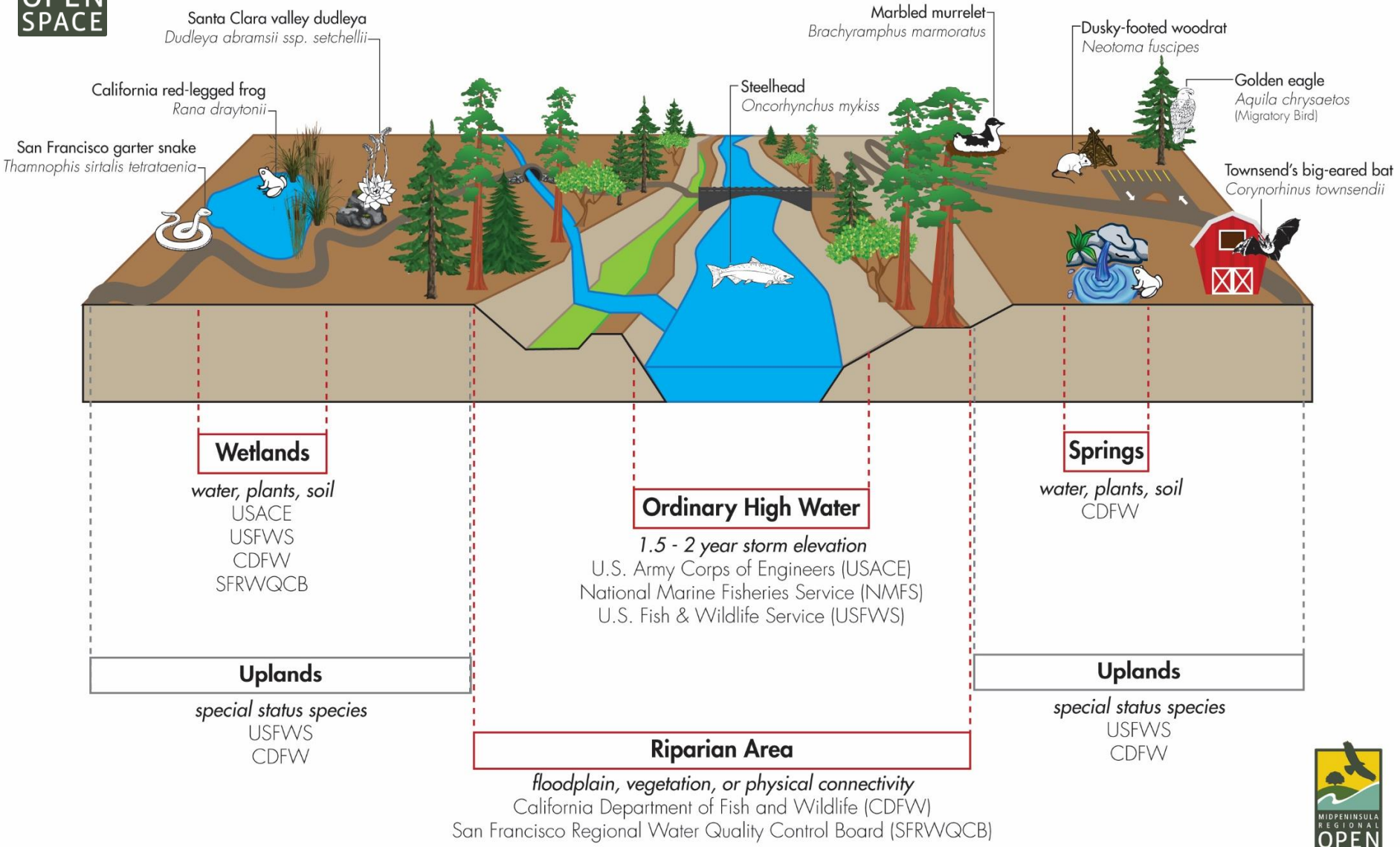


+





Environmental Jurisdiction Diagram

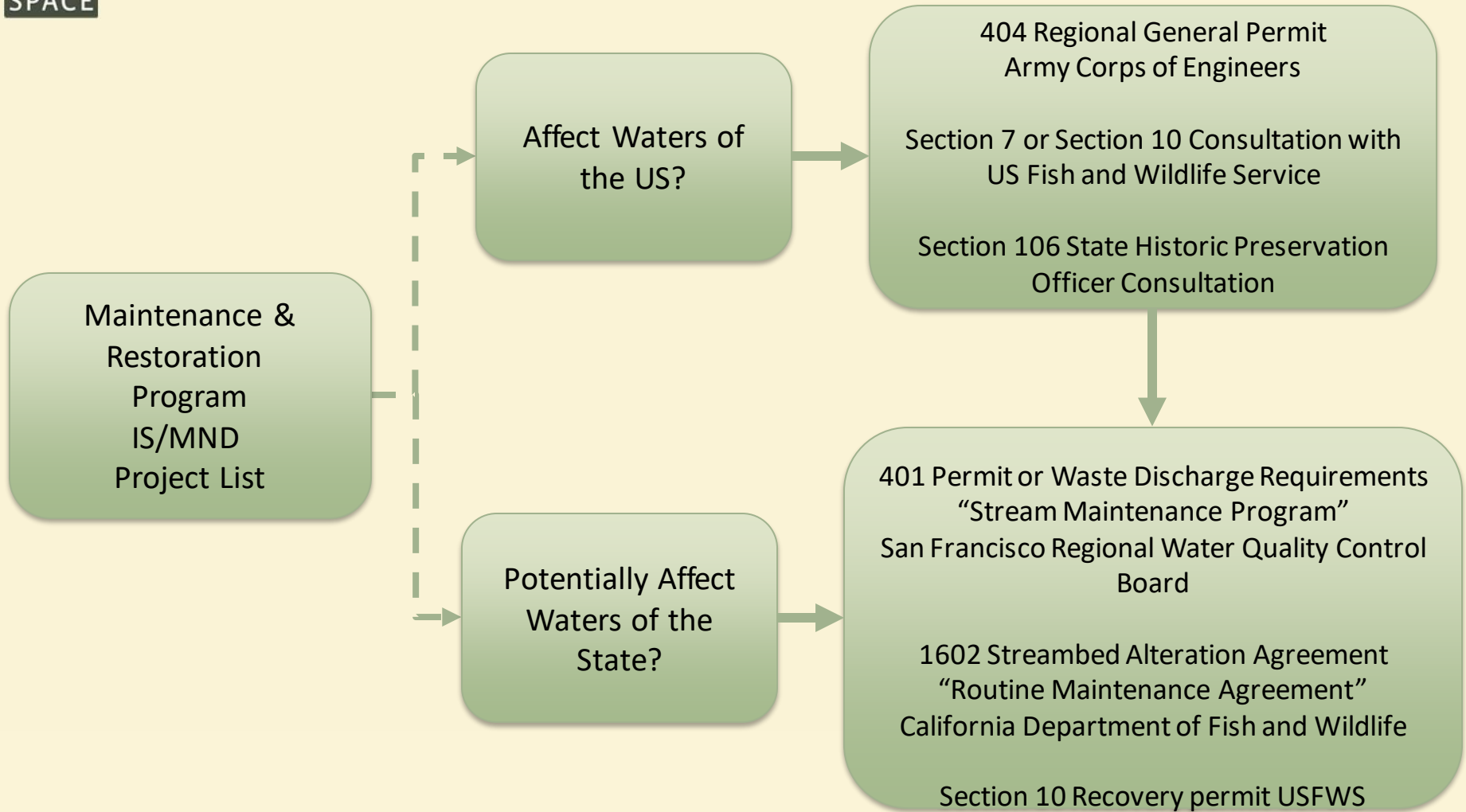


*Does not include:
 - Water Rights administered by the State Water Resources Control Board
 - City or County Environmental Ordinances or Codes





Midpen's Covered Activities Development Process





Questions?

